



AVK LEVER AND WEIGHT KIT FOR SWING CHECK VALVES

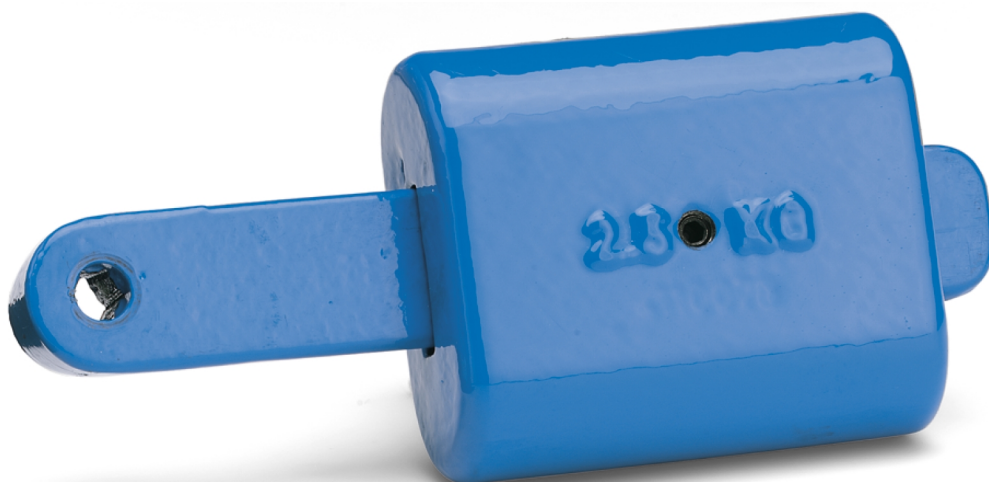
41/D-001

For swing check valve series 41/60 and 41/39

AVK swing check valves with lever and weight are appropriate for installations with an increased risk of water hammer at standard flow velocities. The solution enables visual check. Valves in small dimensions also offer the possibility of priming by moving the lever manually. The weight is adjustable on the lever to achieve a careful closing against the seat as well as an optimum closing speed to prevent water hammer. The lever and weight are of ductile iron with blue epoxy coating.

Product description:

Swing check valve lever and weight kit

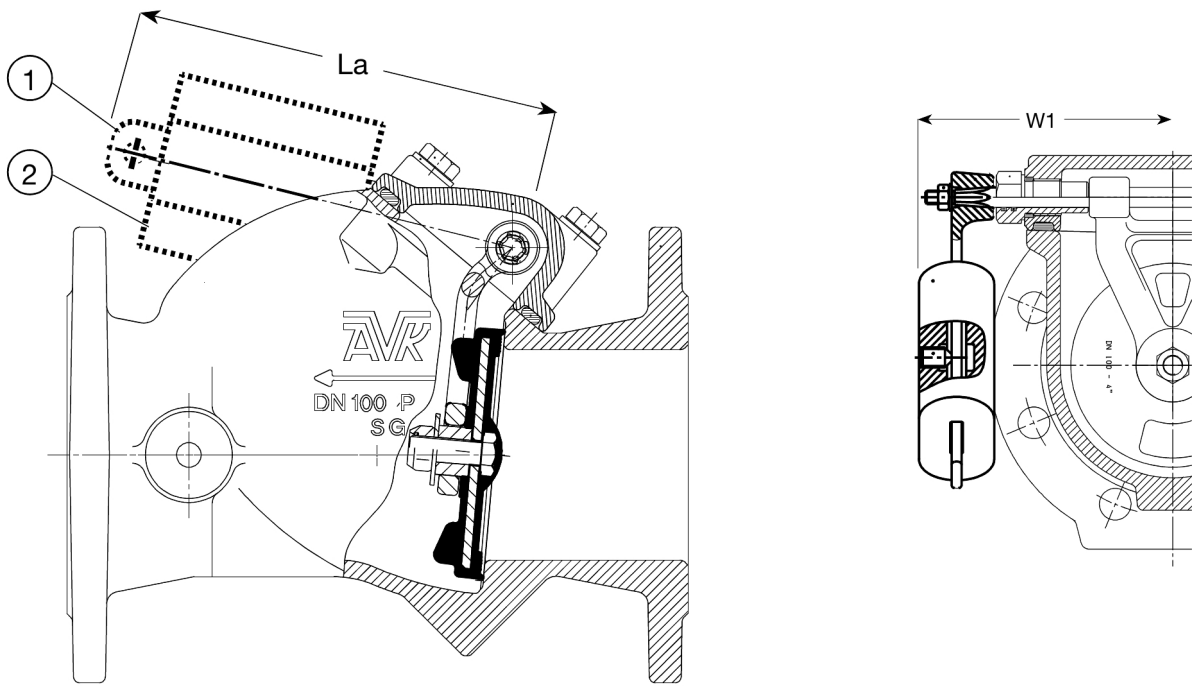


Expect... **AVK**

AVK LEVER AND WEIGHT KIT FOR SWING CHECK VALVES

41/D-001

For swing check valve series 41/60 and 41/39



Component list:

1. Lever	Ductile iron
2. Weight	Ductile iron

Components may be substituted with equivalent or higher class materials without prior notification.

Reference nos. and dimensions:

AVK ref. no.	DN/DN	La mm	W1 mm	Theoretical weight/kg
41-080-23-000	50 - 80	150	148	2.8
41-100-23-000	100 - 100	185	158	2.9
41-150-23-000	125 - 150	230	200	5.6
41-200-23-000	200 - 200	280	230	5.7
41-300-23-000	250 - 300	525	405	13
41-350-23-000	350 - 350	500	441	23
41-400-23-000	400 - 400	500	476	40
41-450-23-000	450 - 450	775	511	43
41-600-23-000	500 - 600	775	541 - 598	60

The designs, materials and specifications shown are subject to change without notice. This is due to the continuous development of our product programme.